

RE 95 512/12.98

Replaces: 02.93

Flushing and Boost Pressure Valve

with limitation of the flushing oil volume
for installation in closed circuits



Flushing and Boost Pressure Valve

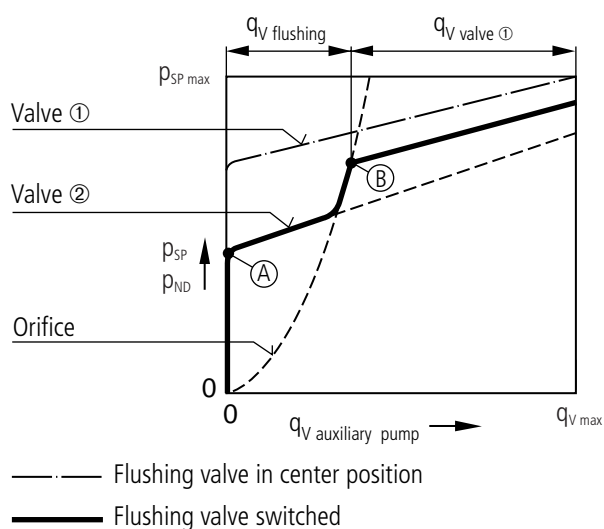
Features

The flushing and boost pressure valve is used to flush the closed circuit when excess heat is generated.

The valve is fitted between service line A and B. When the pressure difference exceeds 3 - 5 bar between the two lines A and B, the flushing valve is opened by the high pressure. The flushing and boost pressure valve ② is set at a fixed pressure of 16 bar and serves to maintain the boost pressure. The flushing operation is effected via an orifice from the low pressure line into the tank. The oil fluid which is removed from the circuit has to be replaced with cooled oil by the boost pump.

Different flushing volumes can be selected by means of orifices.

Characteristical curve



Point A: Boost pressure relief valve ② opens (16 bar)

Point B: $q_{V \max \text{ flushing}}$ (Boost pressure relief valve, variable pump ① opens)

$q_{V \text{ flushing}}$: flushing oil volume; flows via valve ② to the tank.

$q_{V \text{ valve 1}}$: Remaining oil volume of the aux. pump; will be flushed out via valve ① into the housing of the variable pump.

Ordering Nr.

Flushing and Boost Pressure Valve

	9 446 469 / 503.20.01.17
--	---------------------------------

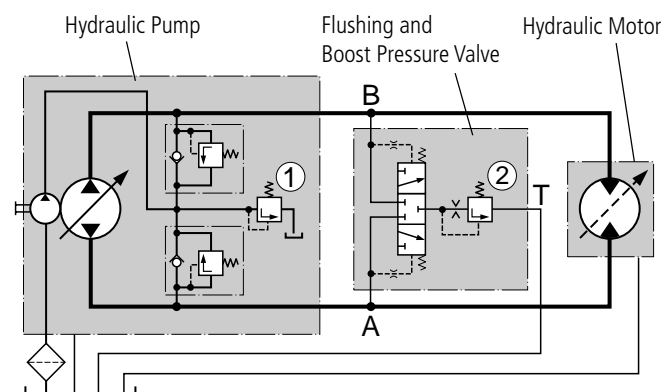
Orifice-Ø (Flushing volume)

1,2 mm (4 L/min) ¹⁾	9 440 249 / 503.20.01.10
1,6 mm (6 L/min)	9 432 472 / 503.20.01.10
2,0 mm (10 L/min)	9 431 308 / 503.20.01.10
2,5 mm (16 L/min)	9 431 309 / 503.20.01.10
2,8 mm (20 L/min)	9 431 310 / 503.20.01.10
3,5 mm (30 L/min)	9 435 172 / 503.20.01.10
4,0 mm (36 L/min)	9 436 622 / 503.20.01.10

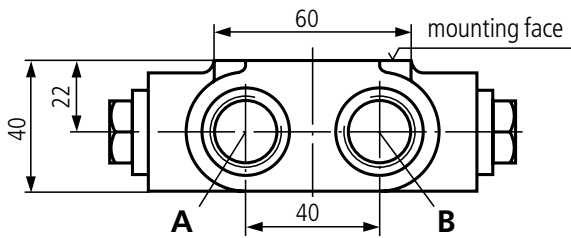
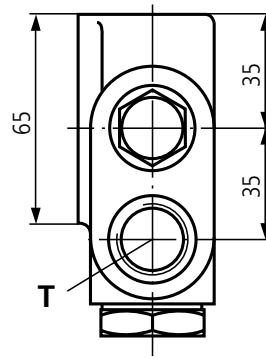
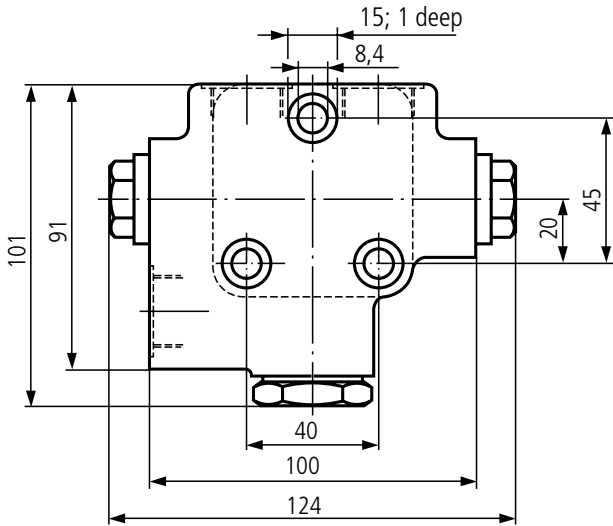
¹⁾ Flushing oil volume at low pressure $p_{ND} = 25 \text{ bar}$ (set on valve ①)

When ordering please state required orifice.

Hydraulic circuit



Unit Dimensions



Connections

- A, B operating pressure M22 x 1,5; 14 deep
- T flushing oil return M22 x 1,5; 14 deep

Technical Data

Type	flushing and boost pressure valve
Pressure setting of the boost pressure valve	16 bar, fixed
Opening pressure of the flushing valve	Δp 3 - 5 bar
Mounting position	optional
Seals	FKM (fluor-caoutchouc)
Weight (approx.)	1,7 kg

Brueninghaus Hydromatik GmbH

Plant Elchingen

Glockeraustraße 2 • D-89275 Elchingen
 Phone +49 (0) 73 08 / 82-0
 Fax +49 (0) 73 08 / 72 74

The specified data is for product description purposes only and may not be deemed to be guaranteed unless expressly confirmed in the contract.